



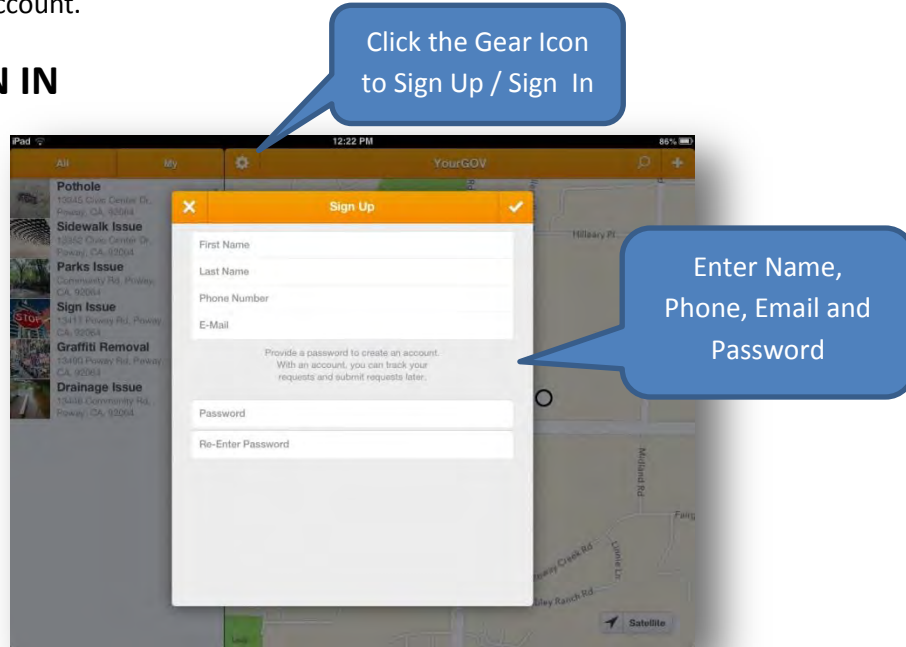
City of Poway

Please note: If this is an emergency, call 911

iPAD User Guide

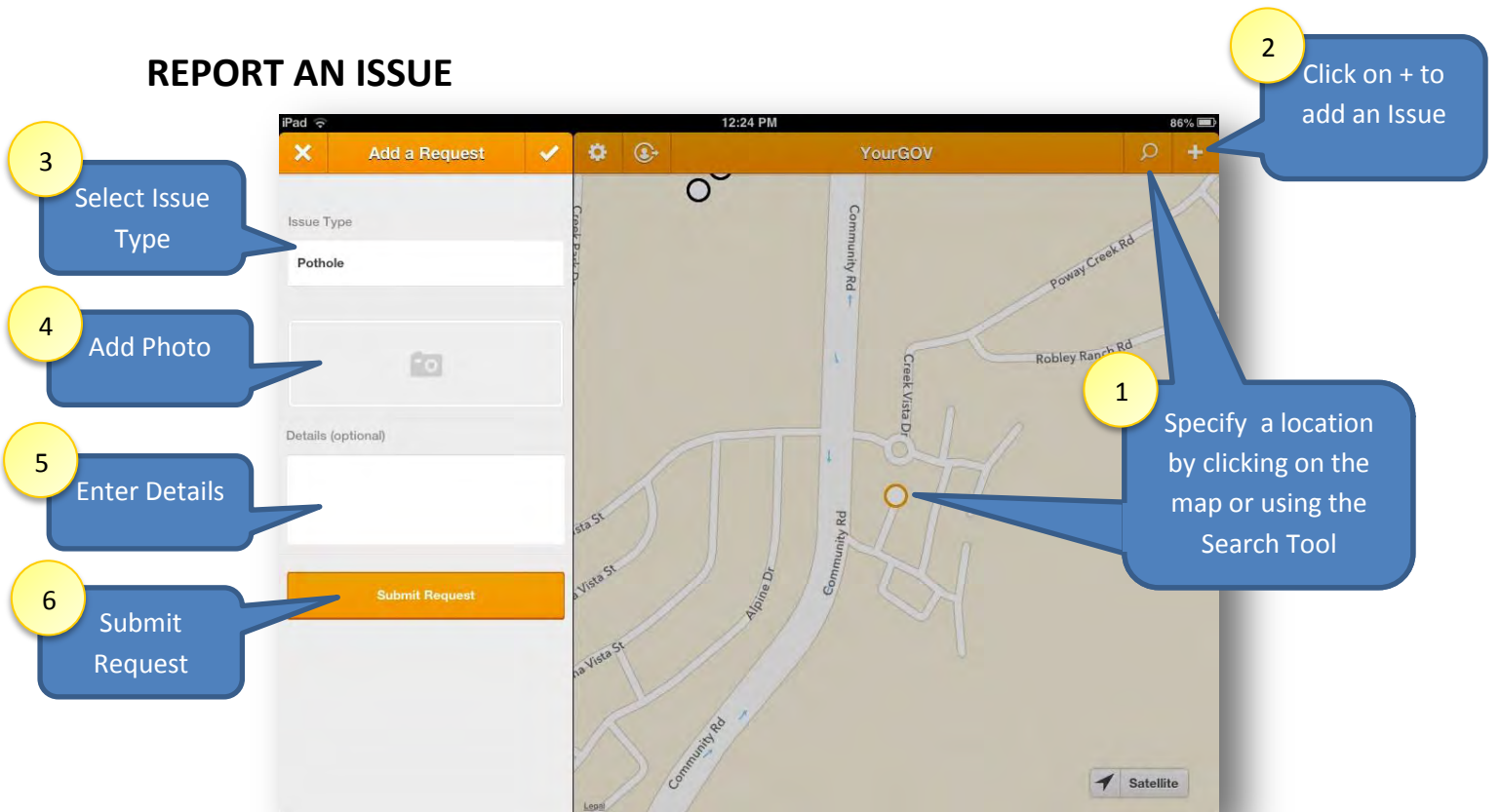
The best way to track your issue is to Sign Up for a YourGov account. However, issues can be submitted without creating an account.

SIGN UP / SIGN IN



Returning users will Sign In with the email and password provided on this screen.

REPORT AN ISSUE



VIEW AN ISSUE

If you are Signed in, you can view the issues you submitted. Please note Code Compliance issues can only be viewed on the My Issues tab by the person who submitted the request.

The screenshot displays the 'YourGov' mobile application interface. At the top, there is a navigation bar with 'All' and 'My' tabs, a settings gear icon, a user profile icon, and the 'YourGov' logo. The main content is split into two panels: a list of issues on the left and a map on the right. The issue list includes:

Issue Type	Address	Distance
Graffiti Removal	13490 Poway Rd, Poway, CA, 92064	0.3 mi
Sign Issue	13417 Poway Rd, Poway, CA, 92064	0.4 mi
Drainage Issue	13446 Community Rd, Poway, CA, 92064	0.5 mi
Parks Issue	Community Rd, Poway, CA, 92064	0.5 mi
Junk Accumulati...	13348 Poway Rd, Poway, CA, 92064	0.5 mi
Sign Issue	13330 Civic Center Dr, Poway, CA, 92064	0.5 mi

The map shows a street grid with several circular markers representing issues. Callouts provide the following information:

- TAB BETWEEN 'ALL ISSUES' AND 'MY ISSUES'**: Points to the 'All' and 'My' tabs in the navigation bar.
- UPDATE USER INFORMATION**: Points to the settings gear icon.
- LOG OUT**: Points to the user profile icon.
- CLICK ON ISSUE TO SEE MORE INFORMATION**: Points to an issue entry in the list.
- MARKERS REPRESENT ISSUES. CLICK TO SEE ISSUE DETAILS**: Points to a circular marker on the map.